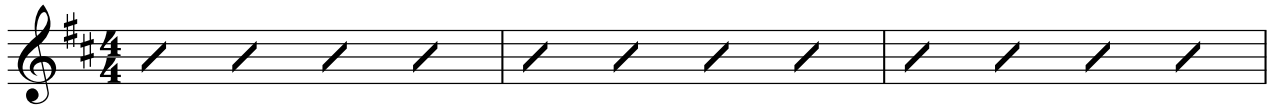


# The Battle Is Yours

Lively ♩ = 125  
D



4 (D) D C/E

In Your hand\_ You hold the\_ keys\_  
On our\_ knees\_ and in the\_ streets,

8 G D

of hell and\_ death,\_ You own\_ the vic - to - ry;  
we fight this\_ fight,\_ You give\_ the vic - to - ry;

12 C/E

At Your name\_ the de - mons flee,\_  
In our\_ hands\_ You place the\_ keys\_

16 1. G D

Be-neath our\_ feet\_ You crush\_ the e - ne-my.

20 D C/E

The bat-tle is Yours,\_ the bat-tle is Yours,\_

24 G D

the bat-tle be- longs\_ to You,\_ might-y\_ God.\_

28 D C/E

This ar-my is Yours,\_ this ar-my is Yours,\_

32 G D

*this ar-my be- longs\_ to You,-* *might-y\_ God.\_*

36 D C/E G

42 D 2. G

*of king- dom\_ come,* *Your will be\_ done*

46 C D

*on earth\_ as it is\_ in hea - ven. The bat-tle is Yours,-*

50 C/E G

*the bat-tle is Yours,-* *the bat-tle be longs\_ to You,* *might-y\_ God.*

55 D D C/E

*This ar-my is Yours,-* *this ar my is Yours,-*

60 G D

*this ar-my be longs\_ to You,-* *might-y\_ God.\_*

64 C G D

69 C G D A

73 Em<sup>7</sup> G C

And we stand

77 D C/E

— and we sing in Your free- dom, stand\_ and we sing in Your free- dom, wor

81 G D

- ship the One Who has o - ver - come! And we fight

85 D C/E

— in the strength of Your king- dom, clothed in the arm-or of Je - sus, wor

89 G D

- ship the One Who has o - ver come!\_ And we stand

93 D C/E

— and we sing in Your free- dom, stand\_ and we sing in Your free- dom, wor

97 G D

- ship the One Who has o - ver come!\_ And we fight

101 D C/E

— in the strength of Your king dom, clothed in the arm-or of Je - sus, wor

105 G D

- ship the One Who has o - ver come! — The bat-tle is Yours,

109 D C/E

— the bat-tle is Yours, — the bat-tle be longs

113 G D

— to You, — might-y — God. — This ar-my is Yours,

117 D C/E

— this ar-my is Yours, — this ar-my be longs

121 G D

— to You, — might - y — God. —

124 D C/E

The king-dom is Yours, — the king-dom is Yours, —  
The po - wer is Yours, — the po - wer is Yours, —  
The glo - ry is Yours, — the glo - ry is Yours, —

128 G D

the king-dom be - longs — to You, might-y — God. —  
the po - wer be - longs — to You, might-y — God. —  
the glo - ry be - longs — to You, might-y — God. —